

The 2014 Optimist South Island Championship and Green Fleet Regatta

22nd an 23rd March 2014

Naval Point Club Lyttelton

The Organising Authority is Naval Point Club



NAVAL POINT CLUB
LYTTTELTON



NAVAL POINT CLUB
LYTTTELTON

NOTICE OF RACE

1. RULES

- 1.1. The regatta will be governed by the 'rules' as defined in the Racing Rules of Sailing 2013-2016.
- 1.2. The Yachting New Zealand Safety Regulations Part 1 will apply.
- 1.3. Rule Appendix P, *Special Procedures for Rule 42*, will apply as amended by the Sailing Instructions.
- 1.4. For protests where only a rule of Part 2, *When Boats Meet*, or rule 31, *Touching a Mark*, is alleged to have been broken, an arbitration hearing may be offered prior to any formal protest hearing.
- 1.5. Racing rules will be changed in the Sailing Instructions in accordance with rule 86, *Changes to the Racing Rules*, as follows;
Boats will not be exempt from displaying a protest flag. This changes rule 61.1(a), *Informing the Protestee*.
Boats failing to finish within 20 minutes after the first boat sails the course and finishes may apply to be scored SRS, "Still Racing Score". This changes rules 35, *Time Limit and Scores*, and A4, *Low Point System* and A5, *Scores Determined by the Race Committee*.
The changes will appear in full in the sailing instructions. The sailing instructions may also change other racing rules.

3. ELIGIBILITY AND ENTRY

- 3.1. The 2014 Optimist South Island Championship is open to all boats of the Optimist class that have a valid measurement certificate and have completed the regatta registration process.
- 3.2. To be eligible to compete each competitor shall be a financial member of a club recognised by their national authority. In addition each New Zealand competitor shall be a financial member of a club recognised by Yachting New Zealand.
- 3.3. Sailors who meet the NZIODA Green Fleet criteria and have not sailed in an open fleet regatta comprising more than 40 yachts are invited to participate in a separate fun event for Green Fleet sailors. Entry requirements for the Green Fleet are as stated in a separate Green Fleet Notice of Race. Green Fleet racing will be on a separate course. It is expected that Green fleet sailors: will be 12 years and under, have sailed for less than two seasons, have not previously raced outside of Green fleet (except at regattas where no Green fleet racing was offered), and that after achieving three or more podium finishes a sailor shall advance to the Open fleet.
- 3.4. The regatta is open to all competitors born in the year 1999 or later.
- 3.5. Entries will be accepted until the normal closing date of Thursday 20th March 2014 :
Open Fleet \$40
Green Fleet \$30
Late Entry after Thursday 20th March an additional \$20 per sailor.
- 3.6. Entries should be made by using the attached Entry Form and sending it together with the required entry fee to:
2014 Optimist South Island Championship, Naval Point Club Lyttelton PO Box 19 733 Christchurch
Or by email to membership@navalpoint.co.nz

- 3.7. Late entries, accompanied by an additional late entry fee of \$20 may be accepted at the Race Committee's discretion until 0930 hours on Saturday 22nd March.
- 3.8. Each boat shall present a valid measuring certificate at registration and in addition, equipment inspection will be made to check compliance with class rules and the Yachting New Zealand Safety Regulations.
- 3.9. Equipment inspection requirements are:
- a. All boats and equipment to be used in the championship contest must have been measured and have a measurement certificate. Pre IOD 95 hulls can be measured using the NZIODA limited measurement form and be issued with a NZIODA Measurement Certificate.
 - c. Entries will only be accepted from boats that have been previously measured. Apart from spot checks and substituted equipment, no initial measuring will take place at the regatta.

4. SCHEDULE OF EVENTS

4.1. Event	Day	Time or time of first warning signal	Number of Races
Registration	Sat 22 nd March	0800 to 0915	
Briefing	Sat 22 nd March	0915	
Racing	Sat 22 nd March	11.00	3
Racing	Sun 23 rd March	11.00	3

- 4.2. No practice race is scheduled.
- 4.3. 6 races are scheduled for the championship and 6 races are scheduled for the Green Fleet.
- 4.4. Prize giving will be held as soon as possible after racing is complete on Sunday 23rd March.
- 4.5. On Sunday 23rd March, the last day of the regatta, no warning signal will be made after 1500.
- 4.6. A Green Fleet sailor's race day briefing will be held before each days racing.
All sailors must attend for information regarding the format of the day's racing.

5. SAILING INSTRUCTIONS

- . Draft Sailing Instructions may be available on the regatta website www.navalpoint.co.nz and Sailing Instructions at registration.

6. RACING AREA

- 6.1. The regatta will be based at Naval Point Club Lyttelton.
- 6.2. The racing area will be on the waters of Lyttelton Harbour. The racing area is shown in Attachment A.

7. COURSES TO BE SAILED

- 7.1. The Open Fleet course will be an outer loop trapezoid with the finish line at the end of the second windward leg and with a gate at mark 3.
- 7.2. The Green Fleet course will triangular.

9. SCORING

- 9.1. A boat's score will be based on their finishing position in their fleet.
- 9.2. Three races are required to constitute a championship.

- 9.3. a) When fewer than four races have been completed a boats series score will be the total of her race scores.
b) When four to six races have been completed a boats series score will be the total of her race scores excluding her worst score.

10. PRIZES

The following trophies will be awarded:

1st Open Championship South Island Optimist Trophy

13. TEAM SUPPORT BOATS AND COACHES MEETING AND TEAM LEADERS MEETING

- 13.1. Team and individual support boats will be allowed.
13.2. Support boat and rescue boat crew representatives shall attend the briefing on Saturday morning.
13.3. Support boats and rescue boats must be registered with the organising authority at registration.

14. INSURANCE

Each participating boat shall be insured with valid third-party liability insurance with a minimum cover of NZD300,000 per incident or the equivalent.

15. DISCLAIMER OF LIABILITY

Competitors participate in the regatta entirely at their own risk. See rule 4, *Decision to Race*. The organizing authority will not accept any liability for material damage or personal injury or death sustained in conjunction with or prior to, during, or after the regatta.

16. FURTHER INFORMATION

For further information:

Naval Point Club Lyttelton Web site: www.navalpoint.co.nz

Contact

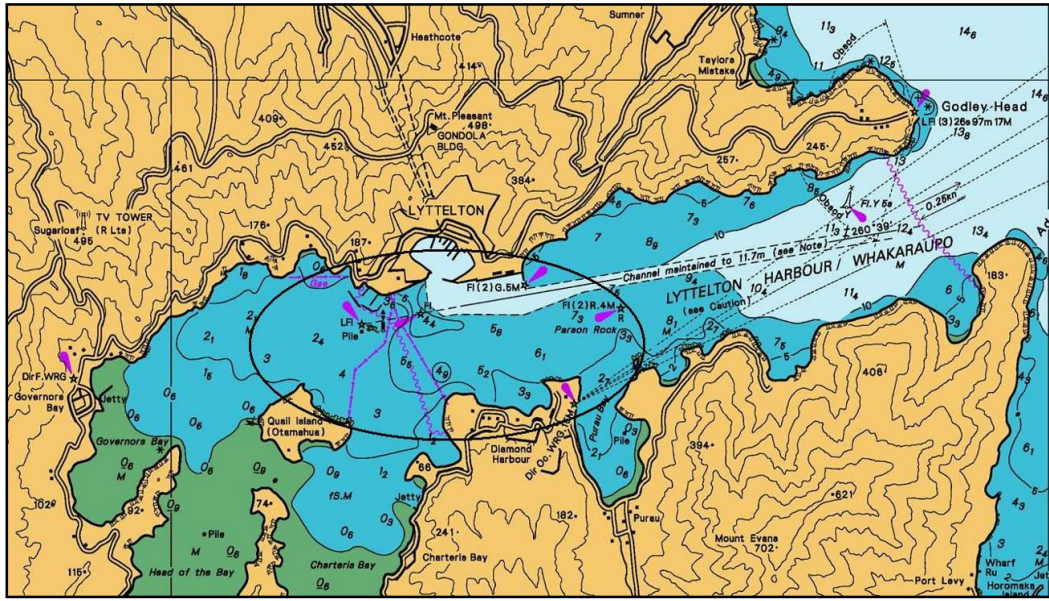
Ross May

Email: membership@navalpoint.co.nz

Phone: 03 328 7029 (during office hours)

ATTACHMENT A

Course Area



ATTACHMENT B

Venue location in Lyttelton



Directions:

Exit Tunnel, turn right at roundabout, after 200m turn left, follow the road for 1km and turn right at the recreation ground, follow the road to the NPCL gate.